

Rolls Royce, England: Reliable Power Supply for Phantom Production



The requirement – power distribution with optimum reliability Production of the first Rolls Royce started with German participation after four years of cooperation between the British prestige company and BMW AG. Goodwood in the south of England became the site of an entirely new company plant for the new Phantom model that set new technical and architectural standards and fully met the requirements of a production plant for a car that is synonymous with luxury and perfection. The planning and implementation of the power distribution systems involved the fulfilment of a number of special requirements. In addition to uncompromising quality, a high level of flexibility and modularity was required, due to the large proportion of manual production steps used at Rolls Royce. The architecture of the factory halls also posed demanding requirements: hardly any straight lines, but lots of curves and greenery in the factory halls instead – a new development in the automotive industry.

MOELLER 

We keep power under control.

The solution – power distribution with know-how made in Germany

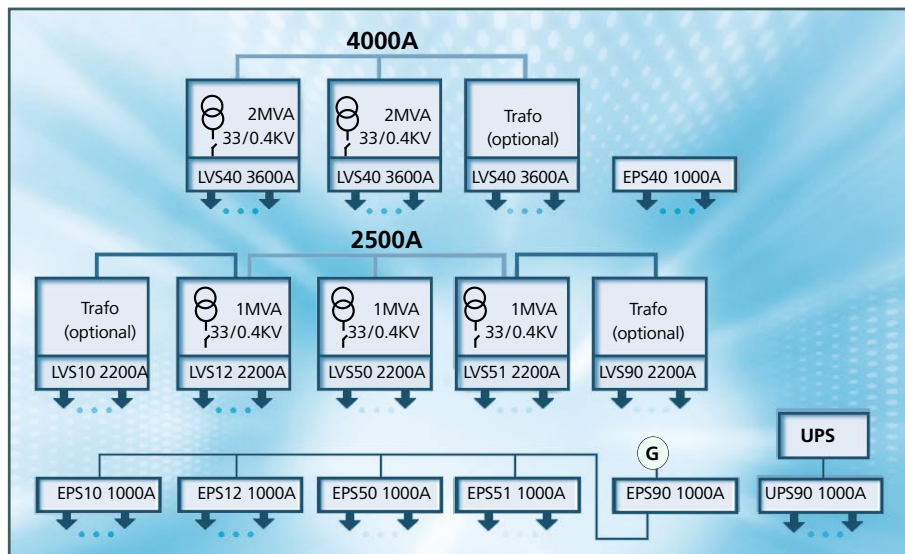
The choice of a German provider and supplier for the construction of the Rolls Royce plant in England was supported by the excellent cooperation between Moeller's international sales department in Bonn and the key account department and sales department in England. The many years of successful customer relations with the German parent company was one of the reasons why Moeller was able to assert itself against national and international competitors. The solution selected was the tried and tested MODAN® power distribution system with LD and BD01 busbar trunking systems. The time-honoured combination of expert customised solutions and the highest standards in product quality continues

to be the outstanding feature Moeller systems, and thus matched the concept of the Rolls Royce plant perfectly. It was exactly these features that substantiated the special trust established in Moeller as a solution partner.



The details – modular power distribution, expandable and flexible

Project engineering and handling was carried out by the experts in international projects of the Systems division. They could fully utilise their experience, which included making allowance for some special national requirements and regulations. The complete installation and commissioning was handled by the Pulheim-based company Enertec. A total of 15 MODAN® power distribution systems have been used. Five of the systems operate as package substations for 3600 A and 2200 A. These powerful and compact power distribution units integrate the MODAN® power distribution system and the low-voltage transformer in the protective enclosure. The degree of protection of the MODAN® power distribution system to IP54 is a special feature. Horizontally and vertically mounted switch-fuse strips are fitted behind closed panel doors. The linking together of the package substations, which are supplied by two medium-voltage networks, was part of the safety



Overview of LV main distribution system and substation

concept for the power distribution system. LD heavy current busbar systems (4000 A and 2500 A) were installed for this purpose. BD01 medium voltage busbar trunking systems (63 A) were used for distributing the power to the final load and for the lighting. This division ensured the safe and optimised distribution of the required power in the entire plant.

The result – reliable power distribution for the production of perfect vehicles

Their special expertise and experience in installations for car plants enabled the international project experts and designers at Moeller to provide solutions for demanding requirements without any complications. At Goodwood Moeller technology ensures trouble-free production and therefore the distinctive quality of the

The technology used

- 15 MODAN® power distributionsystems consisting of 55 panels
- Five of which are packagesubstations for 3600 A and 2200 A
- LD busbar trunking system (4000 A and 2500 A), 450 m
- BD01 busbar trunking system (63 A), 700 m



MODAN® system as package substation

Quicklink ID:

Moeller GmbH
 Hein-Moeller-Str. 7-11
 53115 Bonn
 Fax: +49 (0)228 602-2275
 E-Mail: info@moeller.net
 Internet: www.moeller.net

MOELLER 
 We keep power under control.